



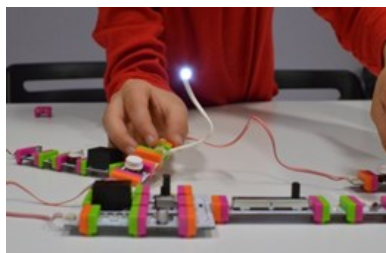
4-H NEWSLETTER

JULY 2016

Bi-monthly Issue

Help wanted for our newsletter and website!

Send your club stories, meeting minutes, photos and/or videos to the office!



Inside this issue:

Memo from Sharon, 4-H Youth Educator	1
July & August Calendar Online Enrollment Info Helpful Websites	2
Beef Improvement Livestock Show	3
Jr. Camp 2016 Horse Club Info for fair	4
SPIN Clubs/Club News	5
M.E. Process Info/Club News	6
Head of the Lakes Fair	7
Inventgenuity Camp	8-9
Clubs and Contact Info	10



Dear 4-H Families

“Wow” Leadership

I recently led a seminar during Wisconsin’s 4-H Youth Conference that helped youth see how they can use their 4-H experience to get a job and/or apply for college. We ended our session writing “Wow” statements. Here is an example: “I took care of my animals daily”.

WOW: “Executed the daily routine of feeding, grooming and exercising my own horses, as well as maintaining clean stalls. The health of my horses is extremely important to me, and these activities help keep them at their best.”

The best thing about this activity was not finding the words to make 4-H activities sound better; it was seeing the members’ eyes light up when they realized this is what they actually do! “WOW” is the perfect word to describe the experiences members have, one’s with life-long impacts. Are you taking advantage of these opportunities?

Adults: Are you being proactive in what you offer the youth? Are project leaders organizing sessions for members? Parents, are you urging your kids to stay involved and try new things such as summer camp?

Older Youth: Do you share your wisdom with younger members? How interested are you in exploring the world around you; our history, culture, government or how things work? Are you content to skim the surface or are you ready to go deeper, expand your world? Will you lead?

Younger Youth: How far do you want to go? Is your goal just to learn a few projects?

4 Challenges to Help Yourself and Your Club Grow (Details for each are in this issue):

- ✓ Lead or assist with afterschool and SPIN clubs this fall. We have lessons and materials to use!
- ✓ Go through the Member Evaluation process this fall. Filling in the application and doing a 10 minute interview is great practice for job hunting, plus you’ll get to go to a camp for free and get scholarship money towards a trip. It’s the equivalent of making more than \$100/hour! Details inside...
- ✓ 7th – 12th graders: Do you have ideas for making Douglas County 4-H better? Help me reform our Junior Leaders Association!
- ✓ Enter projects in the Head of the Lakes Fair. Talking/demonstrating for judges and the public is a fantastic way to grow communication and leadership skills!

Thank you for your willingness to keep growing! Have a great summer!

Sharon Krause
4-H & Youth Development Educator
sharon.krause@ces.uwex.edu
715-395-1365

JULY

- 4 UW-Extension Office Closed for Independence Day
- 11 Leaders Meeting-Fairground Youth Building 6:30 p.m.
- 15 Registration open for Head of the Lakes Fair
- 19-20 Beef Assoc. Livestock Show 20th- Youth will show
- 21 Farm Fun Day and annual auction in the evening
- 23 Douglas County 4-H Horse Association Clinic-Fairgrounds
- 23 Jr. Camp Counselor Training

JULY

S	M	T	W	T	F	S
					1	2
3	4	5	6	7	8	9
10	11	12	13	14	15	16
17	18	19	20	21	22	23
24	25	26	27	28	29	31

AUGUST

- 2-4 4-H Junior Camp~ Located at Burnett County Youth Camp
- 6 NW Dog Agility Fun Match-Chippewa Falls, WI
- 8 Leader's Meeting-Fairground Youth Building 6:30 p.m.
- 4-14 Wisconsin State Fair-West Allis
- 11 Mighty Machines, Superior Middle School 4-7:00 p.m.
- 21 Clover Country Countywide Hay Ride-Luostari Farm 5:30 p.m.
- 22 Douglas County 4-H Horse Association Meeting-Youth Building 6:00
- 23-28 Head of the Lakes Fair
- TBD 4-H booths on Family Nights at local schools and their open houses

AUGUST

S	M	T	W	T	Fr	S
	1	2	3	4	5	6
7	8	9	10	11	12	13
14	15	16	17	18	19	20
21	22	23	24	25	26	27
28	29	30	31			

4-H ONLINE
ENROLLMENT 2015-2016

<http://wi.4honline.com>

Re-enrollments for 2016 were due December 31, 2015.

New members can call the office for help in enrolling or contact the leader of the club they want to join. Dues are \$5.00 for 4th grade and up and \$3.00 for youth K-3. Douglas County community clubs are listed on the last page.

Help with 4HOnline

Did you forget your password? Need to update your contact information? Can't remember what email address you used to register last year? If you need help using 4HOnline.com please call 715-395-1363. If you remember your email but not your password, request a new password and it will be sent to your email. If you do not have access to an electronic device to register you can come to the office and we can help you! You will still be required to fill out a paper enrollment form for authorizations.

Deadlines:

Re-enrollments are due to the Extension office by **Dec. 31**. New enrollments are due by **May 1**. Project changes (drops & adds) must be made by **May 1**. 4-H'ers enrolling after these dates will not be eligible to show at the Fair unless approved by the Executive Board.

HELPFUL WEBSITES

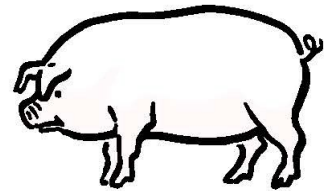
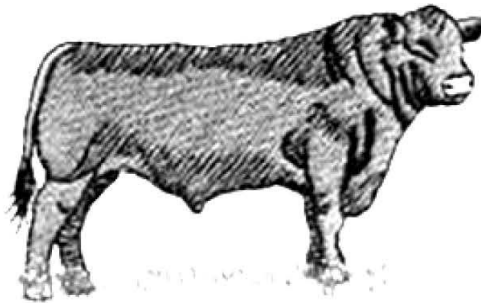
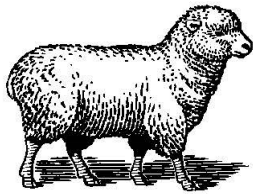
Click on links to go to these sites

Douglas County 4-H	http://douglas.uwex.edu/4h
4-H Online	http://4honline.com
Wisconsin 4-H	http://4h.uwex.edu
4-H Community Club Central	http://4h.uwex.edu/clubs
Head of the Lakes Fair	http://www.holfair.com
National 4-H	http://4-h.org
4-H Shopping Mall	http://www.4-hmall.org
UW-Extension Media Catalog	http://www.uwex.edu/ces/media/catalog
Wisconsin State Fair Park	http://www.wistatefair.com
Douglas County UW-Extension	http://douglas.uwex.edu
Douglas County	http://www.douglascountyiwi.org
City of Superior	http://www.ci.superior.wi.us

DOUGLAS COUNTY BEEF IMPROVEMENT ASSOCIATION

Is proud to sponsor the

49th Annual 4-H/FFA Livestock Auction Thursday, July 21, 2016 7:00 pm Head of the Lakes Fairgrounds



Events

Wednesday, July 20, 2016

Livestock Judging Show Starts
At 9:30 a.m.

FREE ADMISSION TO ALL EVENTS

Everyone Welcomed!!
Come bid/buy locally raised
beef, lamb and/or pork

Thursday, July 21, 2016

FARM FUN DAY 2:00—6:00 pm

- Petting Zoo
 - Hay Rides
 - Face Painting
 - Inflatable Bouncy House
 - Inflatable Obstacle Course
 - Pony Rides
 - 4-H Booth
 - Arts and Crafts
 - Farmer's Market
- And more.....

**Let the
Bidding
Begin!!**

dcbeef.com

7:00 pm 4-H/FFA Livestock Auction



JUNIOR CAMP



Deadline extended to July 8th

We will be holding 4-H Camp at the Burnett County Youth Camp, Burnett County, WI this year. We all need to start recruiting campers like crazy! Campers are youth from ages 8-13 and, as usual, non-members are welcome to participate and only pay an additional \$5 fee to cover 4-H membership. Club leaders, please encourage your members to participate in Summer Camp! Please find the registration form in our office at 1313 Belknap Street, Room 107, Superior, WI or online at

<http://douglas.uwex.edu/4h/special-events-and-camp-registration-and-info/>.



This year's theme is Greek Mythology!

Horse Projects Outside of the Ring

Remember for the fair, anyone in the horse project, whether bringing a horse this year or not, may also enter projects under department 110, class C horses. The list is below with the project number. Lets fill up the youth building with horse projects!!

- | | |
|--|--|
| 100. A chart showing the cost of keeping this animal | 115. Poster showing any body system of this animal |
| 101. Handmade item exhibitor made for this animal | 116. Scale model of this animal's housing needs |
| 102. Report or poster on the history of this animal | 117. Display on how to show this animal at the fair |
| 103. Report on the care or training of this animal | 118. Animal health records or immunization schedule |
| 104. Scrapbook, poster or journal of observations or experiments done in this project. | 119. Display on judging this animal |
| 105. Exhibit or poster on different breeds or varieties of this animal | 120. Photo or drawing of this animal |
| 106. Exhibit or display of feeds and forage and nutrition | 121. Finished workbook, scrapbook or project guide for this animal |
| 107. Photographs or story of trip taken to learn of this animal | 122. Exhibit on safety around this animal |
| 108. A by-product of this animal made into product by member | 123. Poster or display on the conformation of this animal |
| 109. Exhibit on careers related to this animal | 124. Poster or report on this animal's reproduction or genetics |
| 110. Exhibit related to sanitation | 125. Display or poster on administering medications to this animal |
| 111. Exhibit related to 5 diseases, bacteria or viruses affecting this animal | 126. Exhibit on transporting this animal |
| 112. Exhibit or poster about products of or uses for this animal | 127. Report on ethics related to this animal |
| 113. Exhibit about common behaviors of this animal | 128. Biotechnology as related to this animal |
| 114. Exhibit or display showing equipment used to work with this animal | |

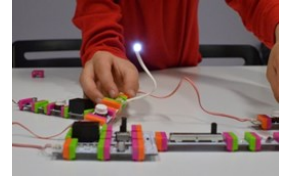
FALL SPIN CLUBS!!

Volunteers: Are you interested in helping but wary of making a long-term commitment? Do you think STEM activities are great but are scared to lead them? Check these out:



Concrete blocks. Simple, yet they can be used to build skyscrapers! Our modern day equivalent is transistors, which make circuits. Starting this fall, 4-H will begin SPIN clubs in area schools using electronic kits called **Little Bits**.

littleBits
ELECTRONICS



Color-coded magnetic pieces can be attached to each other in a myriad of ways, giving users a chance to use their imagination. Science knowledge is not needed, making these ideal for youth (and adults!) who are artistically talented but intimidated by technology. For those who are accustomed to working with these types of materials, Little Bits can improve other projects, such as making a robot move faster as the temperature rises or adding blinking lights to an android. *To see a 5-minute video of Little Bits in action, google "TED talk Ayeh Bdeir".*



**BALLS &
TRACKS**

Balls & Tracks is a curriculum that uses pipe insulation and marbles to build ski jumps and roller coasters. No computers or wires! Tape, string, cardboard and plastic containers are all that's needed. This activity was a major hit at our recent Inventgenuity Camp (see page 8-9). Campers started with one simple track in the shape of a ski jump that sent a marble towards a target. By the time they were done they were using two tracks, each with a loop in it! It's tricky to get these to work consistently, but great fun!

CLUB NEWS

Stoney Brook Riders sent in this photo of their last meeting (a few people were missing). Their club's focus is on horse projects.

All clubs are encouraged to send articles & photos of their activities to the office!



The Member Evaluation Process: A Growth Opportunity that Pays!

The M.E. Process is the process by which Douglas County 4-H allocates countywide project awards, leadership trips, scholarships, and other special recognitions. It involves filling in an application and going through a short interview with members of the Leaders Association.

Besides being recognized during Achievement Night, everyone who goes through the process is automatically awarded a full scholarship to either our regional Winter Camp or the state's Art Camp at Upham Woods. Other partial scholarships are awarded to help pay for state and national trips. This year, Callie Lier and Sarah Wahlquist each received \$600 towards the American Spirit trips. They also filled in their points forms (due in June) for another \$250, so they only had to pay \$350 for a \$1200 trip! They both also had the chance to attend Winter Camp. ***That's over \$900 in benefits for a 10 minute interview and an hour or so of filling in some forms!***

The form allows for a concise statement of what you have accomplished during your total 4-H experience. You will be evaluated on what you've learned, done, accomplished, and how much you've "grown." You'll need to pick out and combine things from throughout your 4-H years and your projects that best communicate what you've done and what the results and benefits have been. Going through the process is rewarding now, plus you'll gain valuable workforce readiness experience. Letters and forms will be sent to all eligible members in July and are due September 1st. Interviews will be held on Monday, September 12 starting at 6:00 pm. For more tips on how to fill in the forms go to: <http://douglas.uwex.edu/4h/4-h-clubs/trips-awards-information/>



4-H TRIPS

Callie Lier & Sarah Wahlquist just returned from American Spirit trips. Callie spent several days traveling the northeastern United States, while Sarah visited National Parks from Wisconsin to Wyoming. Both will share their experiences during this year's Achievement Night.

Trips offered to older Douglas County youth every year:

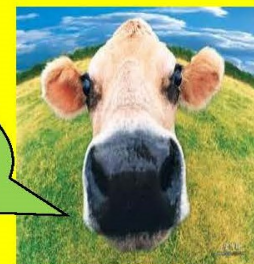
Art Lab, Winter Camp, Superior Days, Space Camp, the State Youth Conference in Madison, Citizen Washington Focus, 4-H National Conference in Maryland, and 4-H National Congress in Atlanta, Georgia. (Some trips are awarded by the state after Douglas County makes a recommendation.)

*Sarah Wahlquist at Mr. Rushmore, one of many stops during the American Sprit West trip.
Taken June 2016.*

2016 Head of the Lakes 4-H Youth Fair August 23-28



HOLFAIR.COM



For more information contact
Sheila Fillmore 715-394-7848
at the Head of the Lakes Fair



University of Wisconsin, U.S. Department of Agriculture and Wisconsin counties cooperating.
UW-Extension provides equal opportunities in employment and programming including Title IX and ADA
requirements. Any person requiring special accommodations can call 715-395-1363 or email me in advance
of scheduled programs



DOUGLAS COUNTY FAIR ENTRY DATES

- Opening day to take the **fair entries** online
Friday, July 15
- **Deadline for entries** to be made online
Sunday, August 14 Midnight
- Dates and times to get **in-person help** with doing your fair
entries online
- Entry **tag pick-up date**
Wednesday, August 17 3-7 p.m.
Fair office in the curling club at the fairgrounds
- Thursday, August 4 3-7 p.m.
- Monday, August 8 from 3-7 p.m.
- Fair office in the curling club at the fairgrounds

THE 4-H OFFICE DOES NOT TAKE IN OR DELIVER ENTRY TAGS. TO ENTER TAGS IN THE FAIR PLEASE
GO TO THIS LINK : [HTTP://HOLFAIR.COM/JUNIOR-FAIR/](http://holfair.com/junior-fair/).

Inventgenuity Camp

Camp was a blast for Douglas County youth ages 9-11. Campers made tracks for marbles, learned about Digital Observation Technology, made dough creatures that conducted electricity and built doormat alarms for their rooms. These activities will be featured in upcoming 4-H events & afterschool programs.



The guys' Funny Gears Team

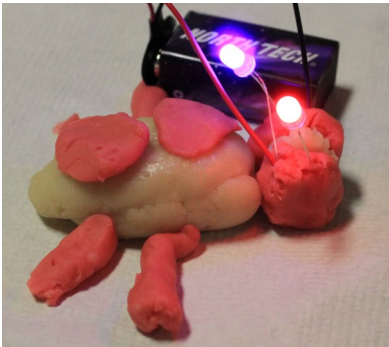
Above: From left to right: Lyndon, Nathan, Gavin, Diedrick, and Brock



Brock opted for a car and trailer



Linnea working with dough creatures



Dough creatures; a "squishy circuit".



Diedrick, Carmelle & Evelyn's first ski jump



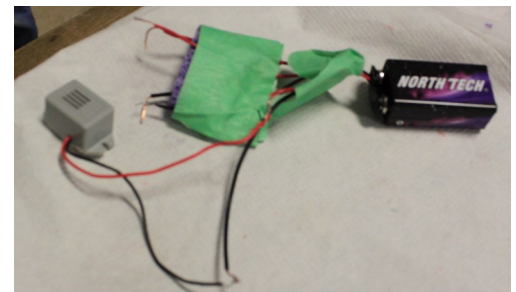
Lyndon, Gavin & Brock had first successful jump that had a loop in it



Evelyn showing her dough creature



Girls Funny Gears team made an amusement park! From left to right: Carmelle, Evelyn, Linnea, Abby



Pressure-sensitive buzzer alarm



Left: Abby, Linnea & Nathan's first ski jump

Inventgenuity Camp 2016 Open House

Family and Friends attended an open house the last day of Inventgenuity Camp. Campers shared what they made held and everyone had a chance to try things.



Gavin shows his dad how his buzzer alarm works

"Can we go longer next year?" -Gavin

"I wish we had another week."-Nathan



Brock and his family build with Funny

"You're doing things like this after school next year, right?"-Dad

"He's absolutely loved it."-Grandma



Linnea & Lyndon demonstrate D.O.T.S kit tools for their family

"I am so glad my dad talked me into coming to this camp!"-Carmelle

"She's had a blast and is looking forward to doing another camp some time; please let us know when you have another."-Mom



Deidrick show off his team's Balls & Tracks creation, a double loop track ski jump that put the marble in the yellow cup!




To see news coverage got to: <http://www.fox21online.com/news/local-news/inventgenuity-programs-kicks-off/40038690#.V2GwuEN5AM.facebook>


Douglas County 4-H
1313 Belknap Street, Room 107
Superior, WI 54880

TAPE

TAPE



Head of the Lakes
United Way



UW
Extension
University of Wisconsin-Extension

Douglas County 4-H Partners
with the United Way

715-395-1365
715-395-1363
715-395-1547
715-395-1426
715-395-1515
715-395-1364
715-395-1427
715-395-7443
715-395-1546

Douglas County UW-Extension Office

Sharon Krause, 4-H Community Youth Development Educator
Cheryl Shockley, Douglas County 4-H Program Assistant
James Anderson, Community Development Educator, Dept. Head
Araceli Whitwam-Sell, Family Living Educator
Jane Anklaam, Horticulture and Agriculture Educator
Jeanne Ward, Office Support Staff
Julie Montgomery, WNEP Coordinator
Tarah Nichols, Educator, Wisconsin Nutrition Education Program
Virginia Leith, Program Assistant, WI Nutrition Education Program

4-H Board of Directors

President
Tricia Garland

Vice-President
Jenny Kröll

Treasurer
Lorrie Gunnerson

Secretary
Patty Lier

Historian
Clorissa Kröll

Youth at Large Delegate
Nicole Greely

Youth at Large Delegate
Hannah Lier

Delegate-at-Large
Nola Stenroos

Delegate-at-Large
Sonya Blair

Advisor
Pat Luostari

Sheila Fillmore



<https://www.facebook.com/pages/Douglas-County-Wisconsin-4-H/>

We're on Facebook!! Like us!!

4-H CLUBS

AFTERSCHOOL CLUBS

Local schools

Sharon Krause

715-395-1365

LEADERS

Nola Stenroos (715) 399-0319

Kim Lagro (715) 399-8754

Pat Luostari (715) 363-2456

Jeanette Kantala (715) 375-2661

Sonya Blair (218) 590-2312

Lynn Pearson (715) 394-3731

Dan Klarner (715) 392-9263

Michelle Kimmes (715) 399-3056

Kelly Carlson (715) 399-2291

Vicki Garro (715) 399-3067

Patty Lier (715) 817-5836

Lisa Vuoremaa (715) 392-1334

LOCATIONS

South Range

Maple

Lake Nebagamon

Superior

Superior

Superior

Superior

Hawthorne

Stoney Brook Riders

4-H CLUBS

BIT N' SPUR 4-H

CLOVER COUNTRY

HORSES 'R' US

LAKELAND RIDERS

NORTHERN LIGHTS

PONY EXPRESS

PUPPY PAIS

TIGERS PRIDE

PLEASE CONTACT THE OFFICE WITH YOUR NEWS, ARTICLES OR PICTURE FROM A 4-H EVENT!

Articles are due the 18th of the month. When emailing your articles, please send them as an attachment.

Send to:
cheryl.shockley@ces.uwex.edu

****NEW ****